



£425,000

Woodland Road, Forest Town,
Mansfield,



Welcome to **BuckleyBrown**, where every home is carefully presented, so you can explore with clarity and confidence.

BuckleyBrown
ESTATE AGENTS

"This impressive three-bedroom detached home is full of character and charm, showcasing stunning original features throughout. Boasting a generous footprint, the property offers versatile living space and a stunning garden, ideal for modern family life and entertaining guests."

- Jasmine, Valuer



A HOME WITH LASTING APPEAL

Full of warmth and personality, this attractive home provides a generous and well-balanced layout with comfortable living accommodation throughout.

Well-proportioned rooms and a versatile design create a home that is both inviting and functional, with plenty of potential for buyers to add their own style and value over time. Situated in a desirable setting, this is a property that truly lends itself to long-term family living and represents an excellent opportunity not to be missed.



THE FINER DETAILS

The ground floor welcomes you via a spacious entrance hall, setting an immediate sense of scale and charm.

To the front, a versatile dining room enjoys a lovely bay window, filling the space with natural light and providing an elegant setting for both everyday meals and entertaining. The generous living room is equally inviting, centred around a feature fireplace and further enhanced by a second attractive bay window, creating a warm and characterful reception space. To the rear, the heart of the home is the superb open-plan kitchen/dining area, complete with a central island and French doors that open seamlessly onto the garden, making it ideal for modern family living and social occasions.

To the first floor are three beautifully maintained and well-proportioned bedrooms, each offering a calm and comfortable retreat, along with a spacious and stylish four-piece family bathroom, designed with both practicality and relaxation in mind.

Externally, the property continues to impress with a substantial private driveway to the front, offering ample parking and leading to a large detached garage. To the rear, a well-tended garden provides a delightful outdoor escape, featuring a manicured lawn and a dedicated seating area, perfect for enjoying warmer days and relaxed entertaining.





BuckleyBrown
ESTATE AGENTS







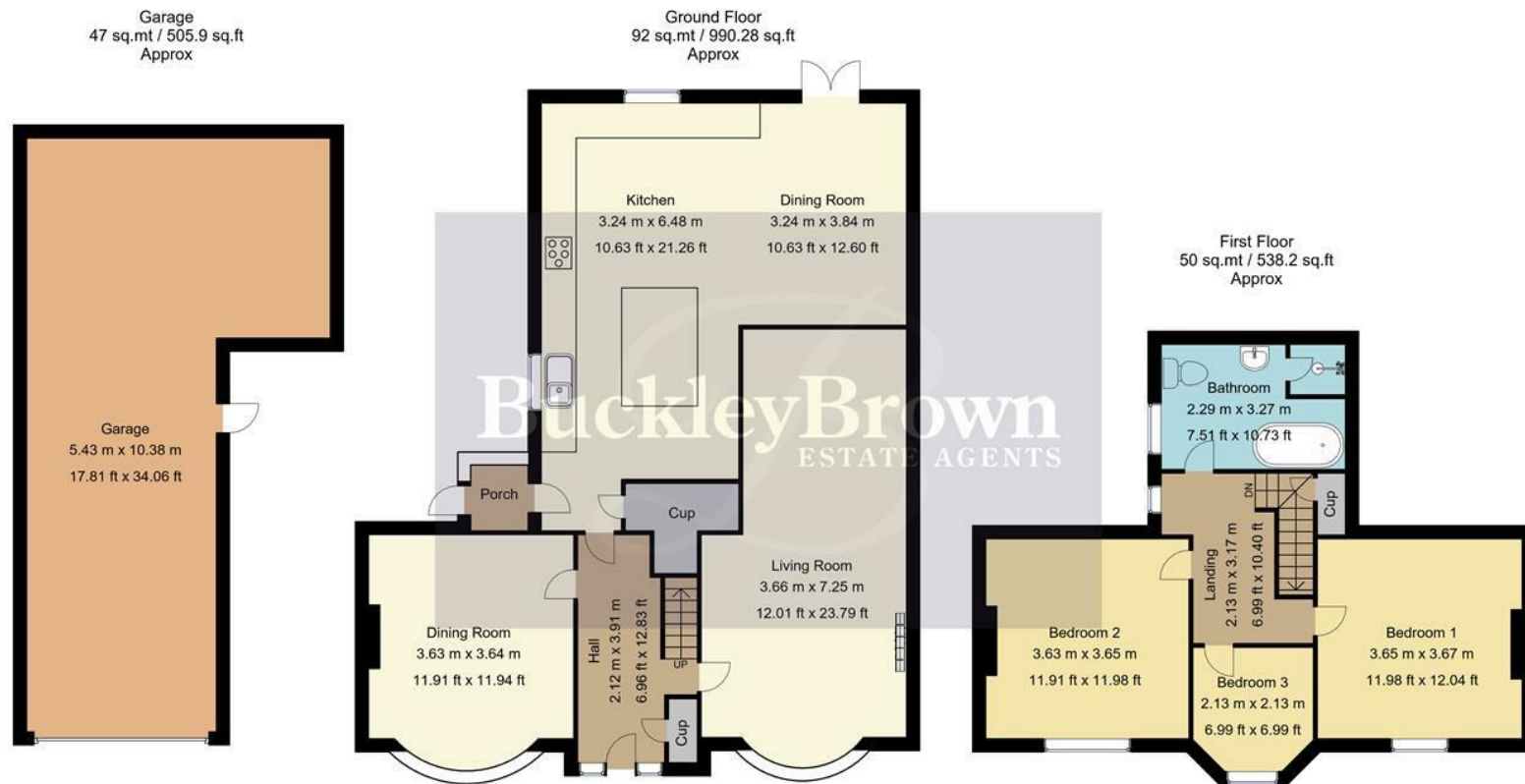
LIFE IN FOREST TOWN

Forest Town is a popular residential suburb on the edge of Mansfield, known for its family-friendly feel, strong community spirit, and convenient access to both town and countryside living.

It offers a good range of local amenities including shops, schools, pubs, and leisure facilities, making it a practical and self-sufficient place to live. The area is particularly attractive to families and first-time buyers due to its affordability and well-established neighbourhoods.

One of Forest Town's biggest draws is its access to green space, with nearby spots such as Vicar Water Country Park offering woodland walks, lakes, and open areas for outdoor recreation. Transport links are also strong, with easy access to Mansfield town centre, the A60, and wider road networks connecting to Nottingham and beyond. Overall, it provides a balanced lifestyle with everyday convenience, good local services, and plenty of outdoor space on the doorstep.





Whilst every attempt has been made to ensure the accuracy of the floor plan contained here, no responsibility is taken for incorrect measurements of doors, windows, appliances and room or any error, omission or misstatement. Exterior and interior walls are drawn to scale based on interior measurements. Any figure given is for initial guidance only and should not be relied on as basis of valuation. These plans are for marketing purposes only and should be used as such by any prospective purchase. Specially no guarantee is should not be relied on as a basis of valuation. These plans are for marketing purposes only and should be used as such by any prospective purchase. Specifically no guarantee is given on the total square footage of the property if quoted on this plan.
 CC Ltd ©2018

Key Features

Spacious entrance hall with welcoming sense of character

Front dining room with bay window

Living room with feature fireplace

Open plan kitchen/diner with island and garden access

Three well proportioned bedrooms

Stylish four piece family bathrooms

Expansive driveway and detached garage

Stunning landscaped garden

Size

Approximately 2033 sq.ft

Energy Performance Certificate (EPC)

Rating D

Council Tax Band C



These particulars are intended as a guide only and do not form part of any offer or contract. All descriptions, measurements, images and plans are provided for illustration purposes and should not be relied upon as statements of fact. Prospective purchasers should satisfy themselves as to the accuracy of the information. Buckley Brown Estate Agents accept no liability for any loss arising from reliance on these details.

© Buckley Brown Estate Agents 2026. All rights reserved.

Exceptional homes deserve
exceptional representation.

Let's Chat.

01623 633633

mansfield@buckleybrown.co.uk

buckleybrown.co.uk

BuckleyBrown
ESTATE AGENTS